

Cryogen Reclamation System

JEOL's new Cryogen Reclamation System offers a convenient, reliable and highly effective solution to managing and maintaining your NMR instrument's cryogen levels.

■ Main features

Substantially reduces the evaporation of liquid helium and liquid nitrogen from the superconducting magnet (SCM)

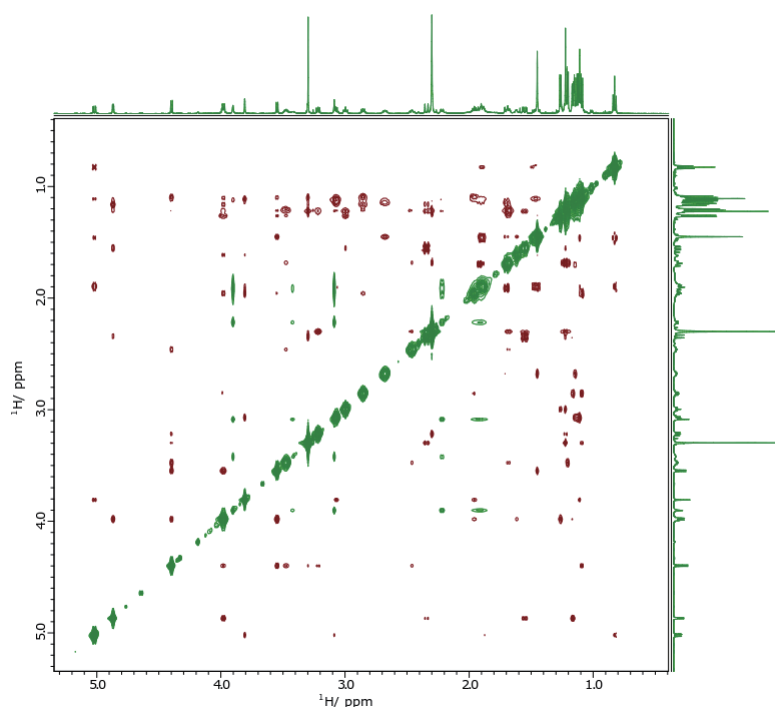
Significantly reduces the frequency and costs of cryogen refills

Maximizes NMR instrument uptime, reduces the risk of shutdown due to cryogen supply issues

Lightweight, space-saving design

Low vibration of the System ensures excellent data quality and low artefact levels

Can be retrofitted to existing JEOL NMR instruments with the SCM maintained "at field"



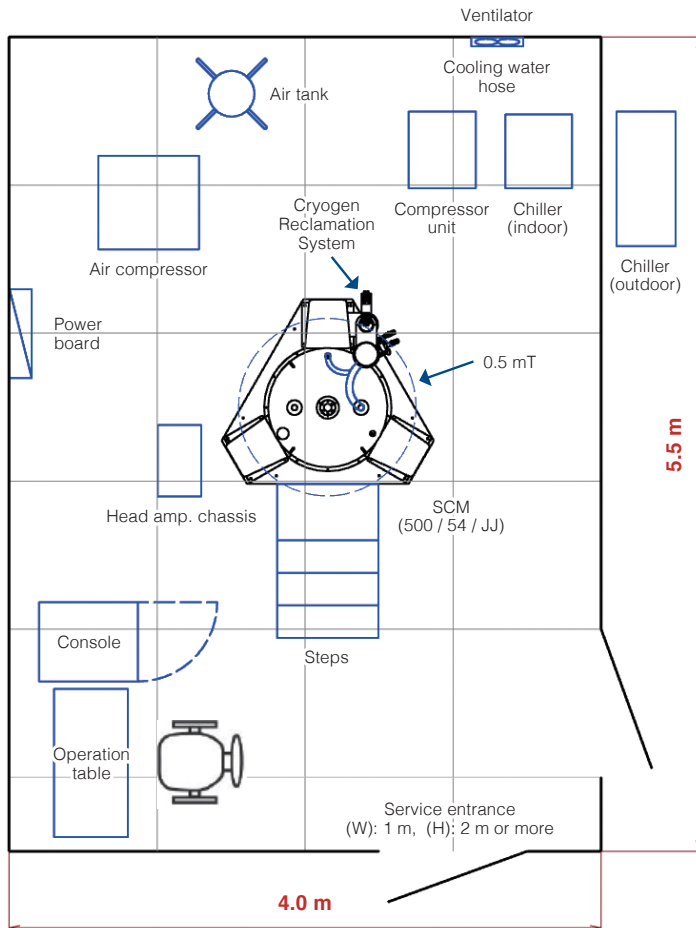
2D NOESY spectrum obtained on JEOL instrument fitted with Cryogen Reclamation System.

The high stability and low vibration of the System ensures excellent data quality and low artefact (e.g. t_1 -noise) levels, even with demanding multidimensional NMR applications.

Item		Specification
Boil-off performance	Liquid helium	Zero boil off (nominal)
	Liquid nitrogen	Zero boil off (nominal)
Applicable magnet		Super conducting magnets of JEOL Ltd. 400JJYH, 500JJ, 600JJ, 700JJ
Power supply and required power capacity	Compressor unit / Control unit	Three phase 200 V Normal: 6.4 / 8.0 kW (50 / 60 Hz) Maximum: 7.1 / 8.8 kW (50 / 60 Hz) Circuit breaker capacity rated 32 to 50 A
Maintenance interval		Annual

- Boil-off performance depends on condition of magnet.
- SCM requires liquid helium and liquid nitrogen during installation period.
- Please contact us for magnets other than these listed.
- It requires cooling water separately.

■ Example of layout for Cryogen Reclamation System with JNM-ECZL500R



Certain products in this brochure are controlled under the "Foreign Exchange and Foreign Trade Law" of Japan in compliance with international security export control. JEOL Ltd. must provide the Japanese Government with "End-user's Statement of Assurance" and "End-use Certificate" in order to obtain the export license needed for export from Japan. If the product to be exported is in this category, the end user will be asked to fill in these certificate forms.

* Appearance and specifications are subject to change without notice.

