



Technical Data

# //// Tornado WP 4325 ComSeal<sup>B</sup>

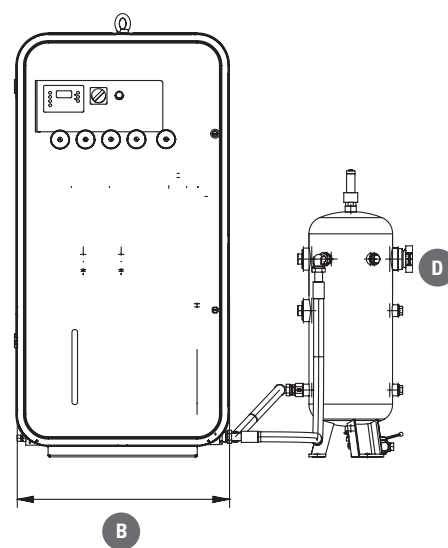
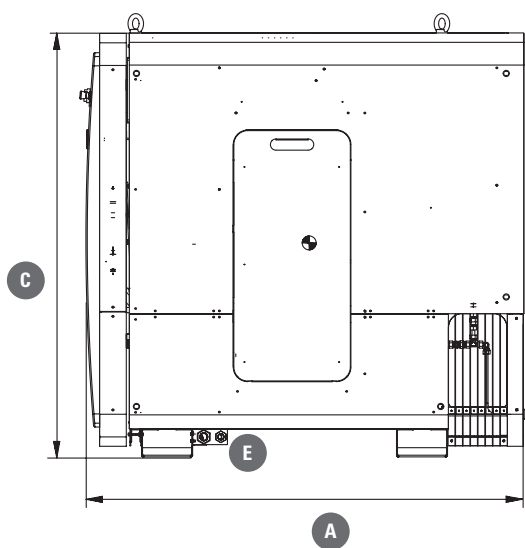
4-stage, air-cooled, direct drive

Medium: Helium

- Turnkey solution in sound proof canopy – silent and ready for operation
- Real helium compressor with special components for helium usage
- Leakage rate of less than 0,1 mbar x l/s
- Fully tested with helium
- Delivered filled with helium to have no purge losses
- Simultaneous supervision of feed pressure, suction pressure and discharge pressure for safe operation
- Total compression divided into 4 separate stages – improved cylinder cooling, lower oil usage
- High efficiency cooling fan system – delta T < 10K
- Complete compressor check at final pressure including 3.1 inspection certificate
- Long operating life with guaranteed availability (minimum 25 years) of replacement parts ex stock
- Trouble-free operation, even under the most extreme conditions (45°C ambient temperature)



- Sauer offers the very latest compressors, control systems, compressed-air treatment systems and accessories
- Optimum customer services – starting with the initial enquiry and extending over the entire life of the product
- Customized solutions produced in accordance with customers' specifications
- Customer-specific documentation and calculation
- Individual, customer-oriented service plans



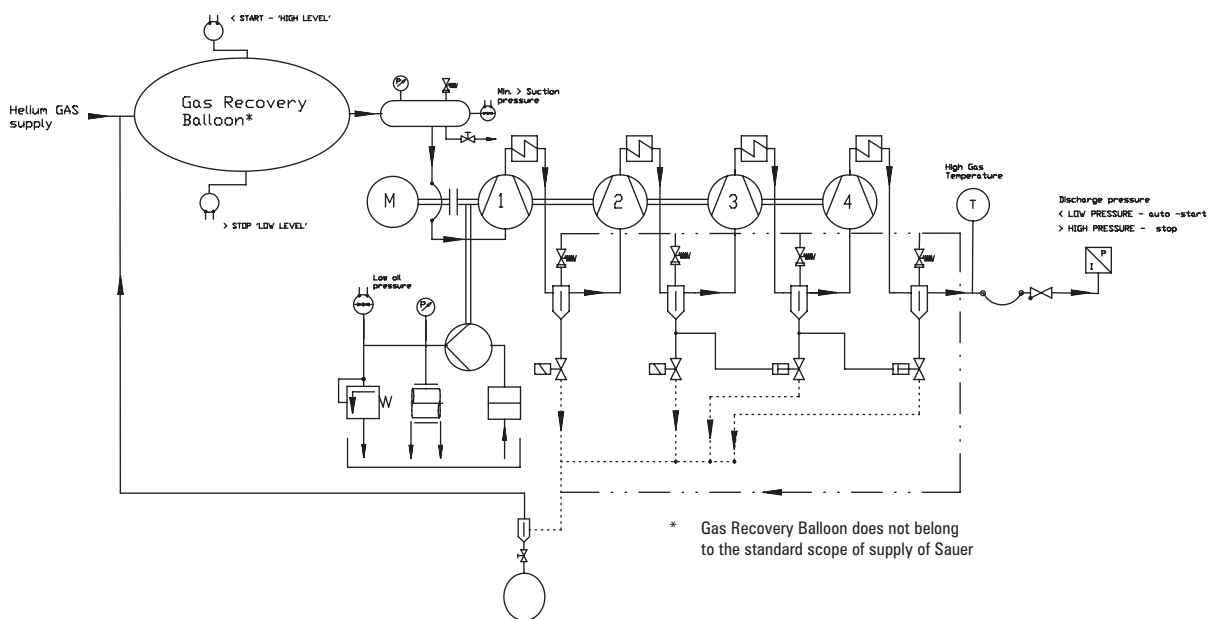
TORNADO

	Dimensions (mm)			Gas Inlet Connection	Gas Outlet Connection	Weight (kg)
	A	B	C	D	E	
WP 4325 ComSeal <sup>B</sup>	1,520	722	1,566	Flange DN 50 KF	10 x 2.5 bite-type	625

PERFORMANCE DATA							
MODEL	Speed [rpm]	100 bar (g) [m³/h]	150 bar (g) [m³/h]	200 bar (g) [m³/h]	230 bar (g) [m³/h]	Rated Power [kW]	Sound Pressure dB(A)@1m
WP 4325 ComSeal <sup>B</sup>	1,500	17.5	17.0	16.5	16.0	11.0	73
	1,800	21.0	20.0	20.0	19.0	13.0	75

[m³/h] acc. to ISO 1217 ref 1,013 bar.a and 20°C; [dB(A)] acc. to DIN 45635

STANDARD ACCESSORIES	WP 4325 ComSeal <sup>B</sup>
Gas intake connection	✓
Gas pressure gauge @ each stage	✓
Oil/water (condensate) separator @ 2nd, 3rd & 4th stage with return-line to relief receiver	✓
Safety valve, sealed @ each stage with return-line to relief receiver	✓
Auto-Unload/drain system	✓
Oil pressure 'low' alarm/trip & gauge	✓
Gas temperature 'high' alarm/trip	✓
Auto Stop/Start via pressure sensor (mounted)	✓
Electric Motor IE 3 (IP55 protection + Class F 'B' temp. rise)	✓
Power supply 380–415V/50 Hz/3ph or 440–480V/60 Hz/3ph	✓
Resilient AV mounts	✓
Color Munsell 7.5 BG 7/2 – Sauer light green-blue	✓
First Oil Fill	✓
First Helium Fill	✓
Static leak rate certificate	✓
Sauer Sound Proof Canopy „Tube Design“ inc. lifting eyes for easy lifting	✓
Common Base Frame inc. piping and wiring	✓
Integral Sauer Electronic Compressor Control "ECC"	✓
Integral Manometer Panel	✓
Suction gas Buffer & Relief Tank inc. Safety Valve	✓



Dependable up to 500 bar – anywhere, anytime.

J.P. Sauer & Sohn Maschinenbau GmbH

PHONE + 49 431 3940-0

E-MAIL info@sauercompressors.de

FAX + 49 431 3940-24

WEB www.sauercompressors.com

01/2016 [suw] • Specifications subject to change without notice.

